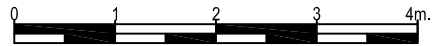
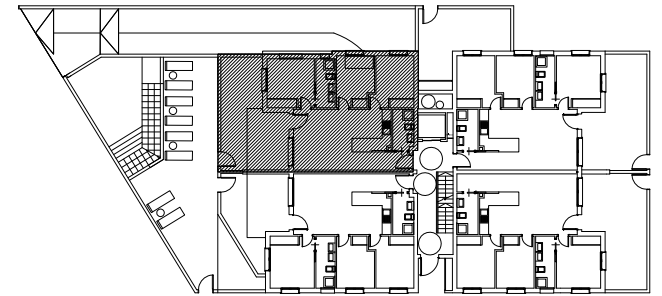


VIVIENDA



PLANTA BAJA



PLANTA BAJA

LEVEL GROUND FLOOR

VIVIENDA B-A

HOUSE B-A

SUPERFICIE
 Construida: 73'81 m²
 Util: 62'13 m²
 Terraza: 28'27 m²

AREA
 Constructed: 73'81 m²
 Usable: 62'13 m²
 Terrace: 28'27 m²

El promotor se reserva el derecho a introducir modificaciones por necesidad de indole t cnica o legal.

The Developer reserves the right to introduce changes or modifications to these plans due to legal or technical reasons.

APARCAMIENTO TRASTERO



PLANTA S TANO

